

NEW MODELS

CROWN



The Crown has been reborn. First, its exterior design speaks of quality and individuality, and its interior is the best of Japanese quality. Second, new technologies give it even more power and greater stability for a commanding presence. Third, safety and environmental protection measures add new depth to the Crown image. This is a car that brings a full measure of satisfaction and tremendous pride in ownership.

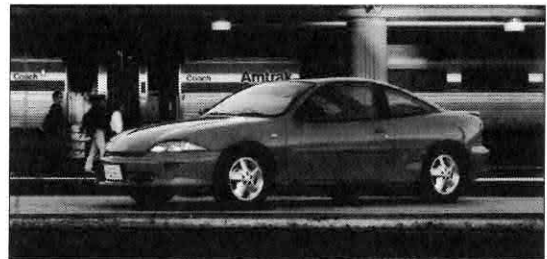
Crown 4-dr hardtop Royal Saloon G Main Specifications

Overall length	4,820mm
Overall width	1,760mm
Overall height	1,425mm
Wheelbase	2,780mm
Tread	front 1,485mm
	rear 1,495mm
Engine	2JZ-GE
Displacement	2,997cc
Max. output	220PS/5,600rpm
Max torque	30.0kg-m/4,000rpm

Crown Majesta C-type i-Four Main Specifications

Overall length	4,900mm
Overall width	1,795mm
Overall height	1,430mm
Wheelbase	2,780mm
Tread	front 1,535mm
	rear 1,525mm
Engine	1UZ-FE
Displacement	3,968cc
Max. output	265PS/5,400rpm
Max torque	37.0kg-m/4,600rpm

Toyota Cavalier



Toyota Cavalier offers casual American taste and individuality, with an exterior that looks ready to go and performance to prove it. The interior is airy and functional, and safety is a top priority. Here's a car made with American esthetics that just fits Japan's market. From GM and Toyota.

Toyota Cavalier Sedan 2.4G Main Specifications

Overall length	4,595mm
Overall width	1,735mm
Overall height	1,395mm
Wheelbase	2,615mm
Tread	front 1,460mm
	rear 1,440mm
Engine	T-2
Displacement	2,392cc
Max. output	150PS/6,000rpm
Max torque	22.1kg-m/4,400rpm

Toyota Cavalier Coupe 2.4Z Main Specifications

Overall length	4,600mm
Overall width	1,740mm
Overall height	1,355mm
Wheelbase	2,645mm
Tread	front 1,460mm
	rear 1,440mm
Engine	T-2
Displacement	2,392cc
Max. output	150PS/6,000rpm
Max torque	22.1kg-m/4,400rpm

TOYOTA MOTOR CORPORATION

International Public Affairs, Tokyo Head Office
1-4-18 Koraku, Bunkyo-ku, Tokyo 112 Japan

Tel: 81-3-3817-9930, 9913, 9941 Fax: 81-3-3817-9017