



AT HOME ON WHEELS

# GRANVIA *Riente*



**T**he multifunctional MPV Granvia Riente combines the practicality of a van with the comfort of a luxury sedan. The interior offers the comfort of a living room, thanks to the flexible arrangement of the swiveling front seats, long-slide and swiveling second seats, and long-slide fold-up third seats. A multipurpose shuttle console moves backward and forward along a track that puts it within easy reach of anyone. A slide-down seat facilitates entry and exit for the elderly or physically challenged, and a swing hanger can accommodate a kitchen unit or store bicycles or other large items. A canopy-type glass sunroof creates an open feeling. All these features, and more, combine to create a whole new level of luxury and utility.

**TOYOTA MOTOR CORPORATION**

International Public Affairs, Tokyo Head Office  
1-4-18 Koraku, Bunkyo-ku, Tokyo 112 Japan

Tel: 81-3-3817-9930, 9913, 9941 Fax: 81-3-3817-9017

## A vehicle to please everyone

Based on the theme "a vehicle for everyone," the Granvia Riente offers performance, comfort, and practicality. In particular, the interior design of flexible seat arrangements and the shuttle console make it as much a living room as a motor vehicle. What's more, the slide-down seat allows even the elderly and the physically challenged to enjoy the same lifestyle as their family and friends.



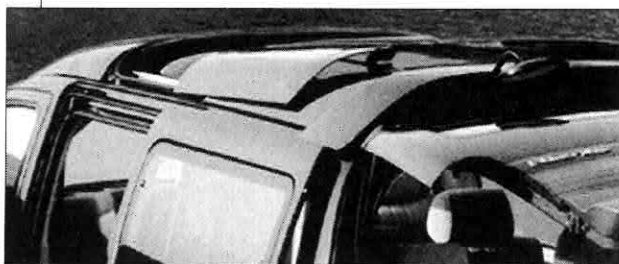
### **Subtle styling projects an image of quality**

This is Toyota's first semi-bonnet van. Its lower body offers a feeling of stability, while its distinctive front-end conveys the image of quality of a luxury sedan. In addition, the glass-enclosed high roofline, a roof spoiler with a high-mount stop lamp, and unique side and rear trim complement each other and present a stylish silhouette.



### **Electric slide-down seat**

The slide-down passenger seat incorporates long-slide — as far as the second seat — swivel, and slide-down functions. Even the elderly and the physically challenged can easily enter and exit the vehicle. Also, it can be adjusted to look and feel exactly like the rest of the seats, so there's no sense of being different from the other passengers. What's more, it features an armrest that folds down so people can move freely from the passenger seat to the driver's seat and back.



### **Canopy-type sunroof**

The all-glass, wide-opening canopy sunroof broadens the appeal of the MPV. The front sunroof tilts, and the rear one slides open, improving space utility and creating a sense of freedom and openness in the interior.

# GRANVIA Riente

## COMFORTABLE LIVING ROOM-STYLE INTERIOR

The interior can be converted into a spacious living room-style space with swiveling front seats, a long-slide, swiveling second seat, and a long-slide, fold-up third seat, plus a multipurpose shuttle console. It offers a comfortable space for meals, meetings, and rest breaks both on the road and after arrival at your destination.

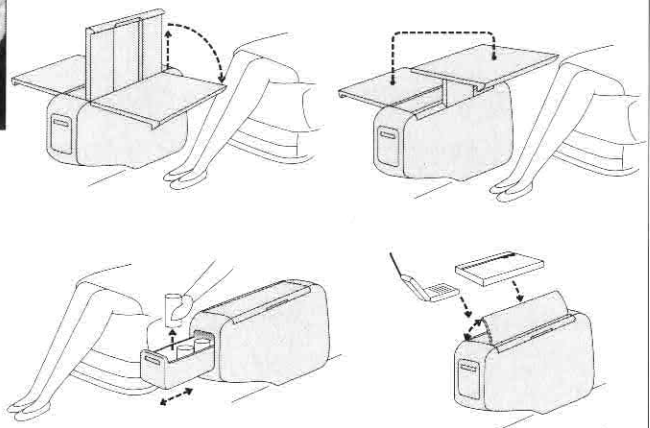


### Shuttle console

The versatile shuttle console has a fold-down table, a warmer/cooler, and an upper tray. It is mounted on an extra-long slide that allows it to move from the front seat all the way to the third seat. This console is easily adaptable to meet any purpose.

### Table

The pull-out, fold-down table top can be used with either one side or both sides out. Its height can also be adjusted.



### Warmer/cooler

The compact warmer/cooler holds up to seven 350ml cans, or five 500ml cans.

### Upper tray

The upper tray puts a cellular telephone or fax machine within easy reach.

# GRANVIA Riente



## Swing hanger

A swing hanger can be mounted on the hinges at the rear of the vehicle. It accepts a bicycle carrier or a special kitchen unit.

## Kitchen unit

Advantages of the Granvia Riente's kitchen unit compared to current built-in models:

- The compact size doesn't restrict use of the third seat.
- It's easy to reach from outside the vehicle, so you can comfortably stand up while cooking.
- Sink and hot plate mounted in opposing positions for ease of use.
- Cooking and kitchen work is done outside, so the interior of the vehicle stays clean and fresh.



## Bicycle carrier

Advantages of the Granvia Riente's bicycle carrier compared to current interior-mounted models:

- Easy to mount and remove.
- Easy and comfortable to attach or remove bicycles from outside the vehicle.
- Can be attached to either one or both sides, so bikes and other cargo can be carried at the same time.

## Main specifications

		<i>Comparison with current Granvia</i>	
Overall length	4,785mm	(+70)	
Overall width	1,815mm	(+15)	
Overall height (spoiler)	2,130mm	(+165)	
	(roof)	2,080mm	(+115)
Seating capacity	6		
Wheelbase	2,985mm		
Tread	front	1,560mm	
	rear	1,540mm	
Engine	1KZ-TE		
Displacement	2,982cc		